

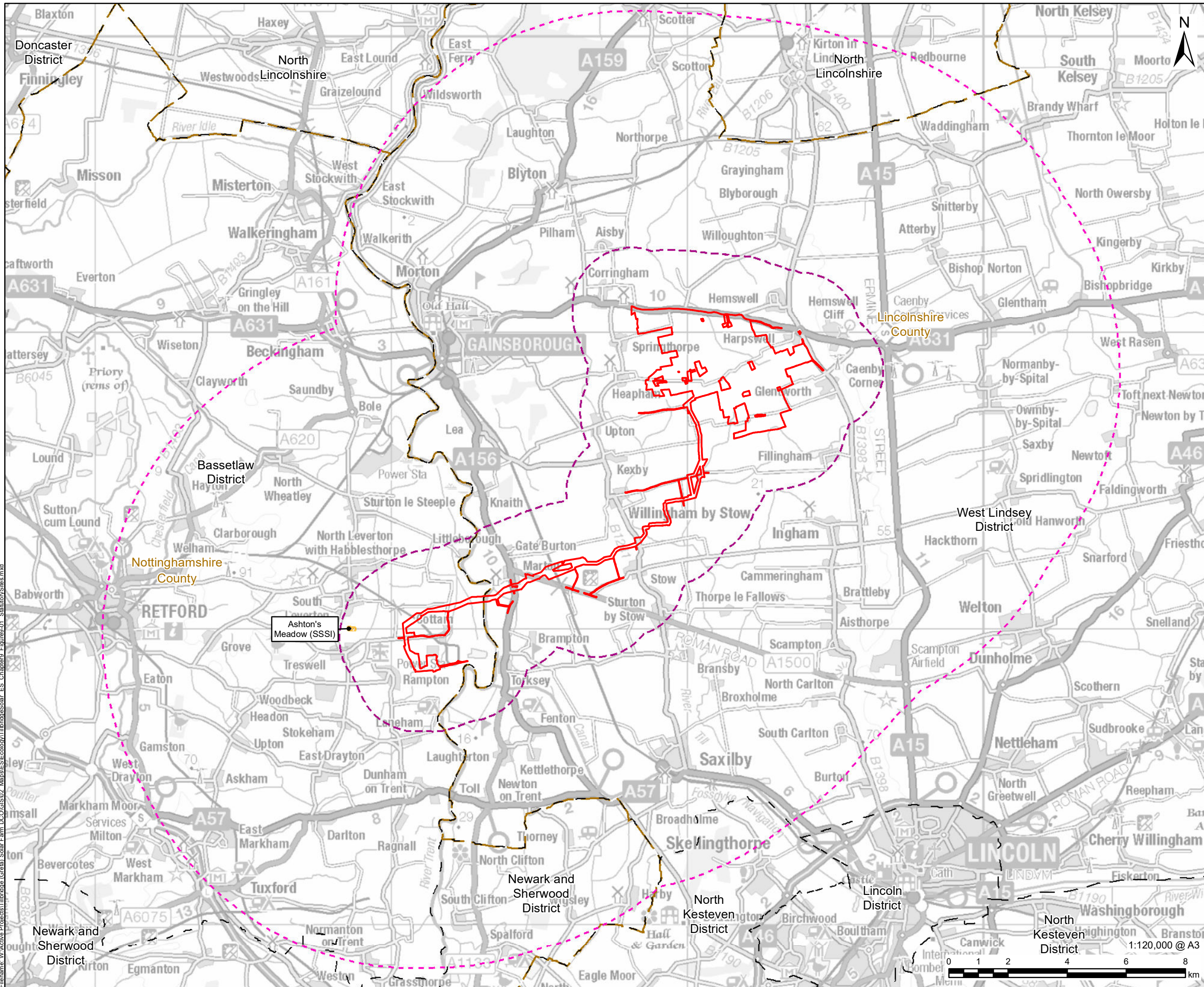
**Tillbridge Solar Project
EN010142**

**Volume 6
Environmental Statement**
Figure 9-1: Sites Statutorily Designated For
Nature Conservation Value
Document Reference: EN010142/APP/6.3

**Regulation 5(2)(a)
Infrastructure Planning (Applications: Prescribed Forms and
Procedure) Regulations 2009**

**April 2024
Revision Number: 00**

tillbridgesolar.com



- LEGEND**
- Order Limits
 - County Boundary
 - District Boundary
 - Study Area
 - 10km Study Area for International Nature Conservation Sites
 - 2km Study Area for Other Statutory Sites
 - Other Statutory Sites, within 2km of proposed site
 - Site of Special Scientific Interest (SSSI)

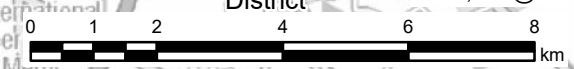
NOTES
© Crown copyright and database rights 2024. Ordnance Survey 0100031673.

ISSUE PURPOSE
DCO Submission

PROJECT NUMBER
60677969

FIGURE TITLE
Sites Statutorily Designated for Nature Conservation Value

FIGURE NUMBER
Figure 9-1



This drawing has been prepared for the use of AECOM's client. It may not be used, modified, reproduced or relied upon by third parties, except as agreed by AECOM or as required by law. AECOM accepts no responsibility, and denies any liability whatsoever, to any party that uses or relies on this drawing without AECOM's express written consent. Do not scale this document. All measurements must be obtained from the stated dimensions.